



MRP3 Polyclonal Antibody

Catalog No	YP-Ab-03971
Isotype	IgG
Reactivity	Human;Rat;Mouse;
Applications	WB;IHC
Gene Name	ABCC3
Protein Name	Canalicular multispecific organic anion transporter 2
Immunogen	The antiserum was produced against synthesized peptide derived from human ABCC3. AA range:971-1020
Specificity	MRP3 Polyclonal Antibody detects endogenous levels of MRP3 protein.
Formulation	Liquid in PBS containing 50% glycerol, 0.5% BSA and 0.02% sodium azide.
Source	Polyclonal, Rabbit,IgG
Purification	The antibody was affinity-purified from rabbit antiserum by affinity-chromatography using epitope-specific immunogen.
Dilution	WB 1:500-2000;IHC-p 1:50-300
Concentration	1 mg/ml
Purity	≥90%
Storage Stability	-20°C/1 year
Synonyms	ABCC3; CMOAT2; MLP2; MRP3; Canalicular multispecific organic anion transporter 2; ATP-binding cassette sub-family C member 3; Multi-specific organic anion transporter D; MOAT-D; Multidrug resistance-associated protein 3
Observed Band	170kD
Cell Pathway	Basolateral cell membrane ; Multi-pass membrane protein .
Tissue Specificity	Mainly expressed in the liver. Also expressed in small intestine, colon, prostate, testis, brain and at a lower level in the kidney.
Function	alternative products:Additional isoforms seem to exist,function:May act as an inducible transporter in the biliary and intestinal excretion of organic anions. Acts as an alternative route for the export of bile acids and glucuronides from cholestatic hepatocytes.,similarity:Belongs to the ABC transporter family.,similarity:Belongs to the ABC transporter family. Conjugate transporter (TC 3.A.1.208) subfamily.,similarity:Contains 2 ABC transmembrane type-1 domains.,similarity:Contains 2 ABC transporter domains.,tissue specificity:Mainly expressed in the liver. Also expressed in small intestine, colon, prostate, testis, brain and at a lower level in the kidney.,
Background	The protein encoded by this gene is a member of the superfamily of ATP-binding cassette (ABC) transporters. ABC proteins transport various molecules across extra- and intra-cellular membranes. ABC genes are divided into seven distinct



subfamilies (ABC1, MDR/TAP, MRP, ALD, OABP, GCN20, White). This protein is a member of the MRP subfamily which is involved in multi-drug resistance. The specific function of this protein has not yet been determined; however, this protein may play a role in the transport of biliary and intestinal excretion of organic anions. Alternatively spliced variants which encode different protein isoforms have been described; however, not all variants have been fully characterized. [provided by RefSeq, Jul 2008],

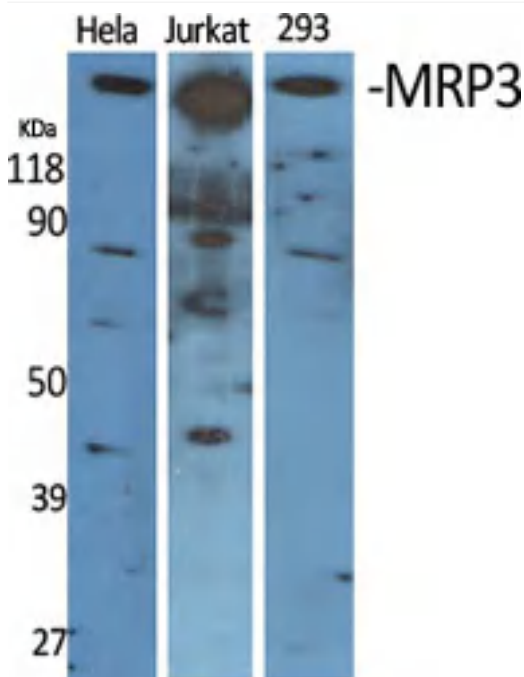
matters needing attention

Avoid repeated freezing and thawing!

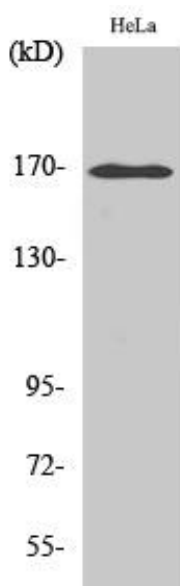
Usage suggestions

This product can be used in immunological reaction related experiments. For more information, please consult technical personnel.

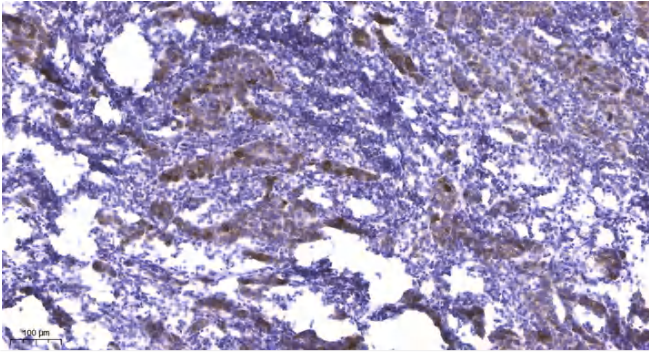
Products Images



Western Blot analysis of various cells using MRP3 Polyclonal Antibody diluted at 1:2000



Western Blot analysis of HepG2 cells using MRP3 Polyclonal Antibody diluted at 1:2000



Immunohistochemical analysis of paraffin-embedded human Breast cancer. 1, Antibody was diluted at 1:200(4° overnight). 2, Tris-EDTA,pH9.0 was used for antigen retrieval. 3,Secondary antibody was diluted at 1:200(room temperature, 45min).